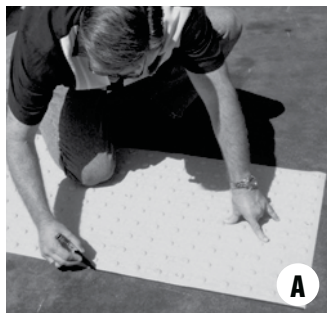


# QUICK GUIDE INSTALLATION INSTRUCTIONS

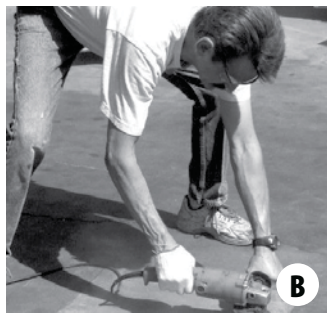
## DWT Smart-Tile Detectable Warning Tiles

DWT Smart-Tile provides a flexible, indestructible, skid-resistant, waterproof walking surface that is easily installed over concrete and most existing surfaces. Do not install Smart-Tile on asphalt surfaces.

**Alert! Failure to follow installation instructions will void manufacturer's warranty.**



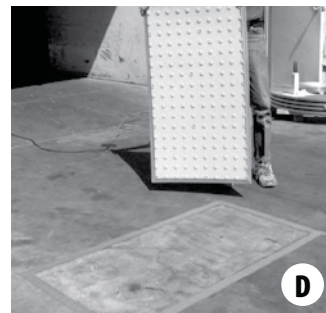
**A.** Using a broom or blower, remove dust and debris from area of installation. Align the *DWT Smart-Tile* in proper orientation on concrete surface. Outline the concrete surface around the *DWT Smart-Tile* using an ink marker and then remove tile.



**B.** It is important to remove dirt, curing agents, topical color, oil, grease or other contaminants from the concrete surface by scouring the surface between the inked lines using a grinder with a wire cup attachment.



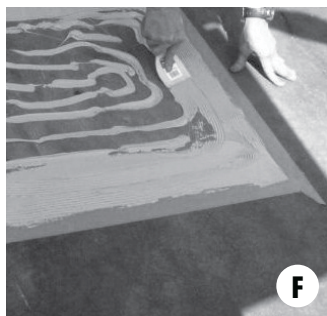
**C.** After grinding surface, remove dust or debris with a broom or blower. Place masking tape on concrete just outside inked lines (approximately 1/4" from edge of tile).



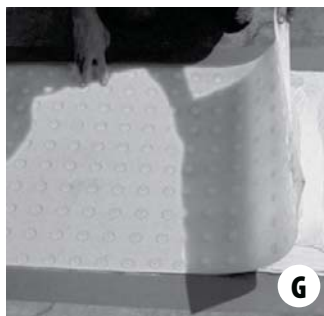
**D.** Place masking tape along outside perimeter of tile (about 1/4" from edge) to protect the *DWT Smart-Tile* surface from excess adhesive oozing from under tile.



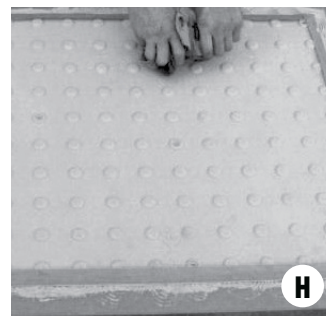
**E.** When using AdcoSeal Körapur 125 adhesive/sealant, be sure to remove peel-away protective cover on bottom of cartridge and remove desiccant prior to loading into caulk gun. Only use adhesive supplied by the manufacturer.



**VERY IMPORTANT!**  
**F.** Apply a minimum of 10 oz. of the Körapur adhesive for every 4 square feet of *DWT Smart-Tile* surface. Using a 3/16" serrated edged trowel, spread the adhesive to cover the entire surface of the taped concrete. The entire concrete surface within the taped area must be "buttered" to achieve maximum adhesion. All cracks or trowel markings must be filled prior to installation of *DWT Smart-Tile*\*\*.



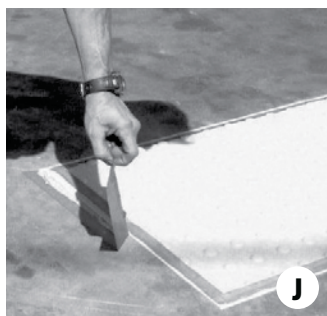
**G.** Align the *DWT Smart-Tile* at one end of the taped area, and then roll tile onto the surface pressing down firmly to remove air pockets as you lay the tile into position. When using *DWT Smart-Tile* side by side, leave a 1/8" gap between tiles.



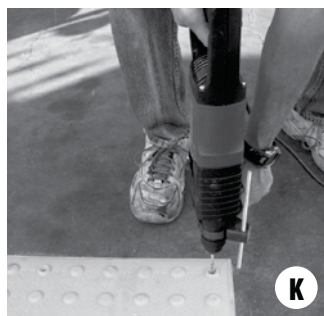
**H.** Using a cloth towel or weighted roller, knead the *DWT Smart-Tile* surface to remove all air from under tile starting from the center and working your way to the edges. Apply sufficient pressure to the *DWT Smart-Tile* to insure complete contact with surface and air removal.



**I.** Use a plastic shaping tool, spatula or a gloved finger to shape the adhesive that has oozed from underneath the *DWT Smart-Tile*. Make a cupped shape profile between the tile edge and adjoining concrete.



**J.** Immediately remove tape from the *DWT Smart-Tile* and concrete surface. Any adhesive on the *DWT Smart-Tile* surface can be removed with mineral spirits.



**K.** Allow adhesive to cure a minimum of 30 minutes prior to drilling holes for stainless steel anchors. While continuing to apply pressure to the *DWT Smart-Tile*, use a 1/4" masonry drill bit and concrete drill, drill a 2" deep hole; blow dust from hole prior to installing stainless steel anchor.



**L.** While still applying pressure to the tile, completely insert stainless steel anchor into molded dome recess and lightly hammer down pin with mallet. Installed stainless steel anchor should be flush to the top of molded dome. Be careful not to overdrive anchor.

**\*\* NOTE:** For concrete surfaces with scored directional lines, compression joints or surfaces with large cracks or are heavily pitted will require additional adhesive for installation. For complete installation instructions, please refer to our installation instruction video available on our website [www.trafficwks.com](http://www.trafficwks.com)

# START HERE

## Installation Manual

### DWT Smart-Tile Detectable Warning Tiles

**DWT Smart-Tile provides a flexible, indestructible, skid-resistant, waterproof walking surface that is easily installed over concrete and most existing surfaces.**

**Alert! Failure to follow installation instructions will void manufacturer's warranty.**

1. Be sure that safety guidelines are in place and use recognized safety procedures in accordance with related industry and government standards during all surface preparations and installation of surface mount detectable warning tiles.
2. When applying all tiles, adhesive, and mechanical fasteners be sure to follow proper procedures as outlined in guidelines issued by their respective manufacturers. Not recommended for application to asphalt surfaces.
3. It is important to coordinate with the Engineer, Architect or Contactor to evaluate the surface and site preparation to ensure it is adequate to install the tiles correctly. Evaluate the design drawings with the Contractor before installation procedures and report any and all design flaws or discrepancies to the Engineer or Architect.
4. Align the **DWT Smart-Tile** on curb ramp according to design drawings, and mark the location of the tile on the concrete surface using a permanent marker. Remove the **DWT Smart-Tile** when perimeter of tile is completely marked.
5. The concrete surface that accepts the **DWT Smart-Tile** must be mechanically cleaned using a shot blaster or grinder equipped with a concrete disk to remove any dirt, curing agents, topical color, oil, grease and other contaminants. The cleaning and grinding of the surface should extend 4 inches beyond the marked perimeter of the surface that will receive tile.
6. After grinding surface, remove dust or debris with a broom or blower. Prior to the installation of the **DWT Smart-Tile**, inspect the concrete surface to make sure it is dry, clean and free of cracks, curing compounds, loose debris, dust, oil, grease and other contaminants, and establish it to be structurally sturdy and cured for at least 21 days.
7. Realign the **DWT Smart-Tile** on curb ramp according to design drawings, and place masking tape on the cleaned concrete surface along the perimeter of the tile approximately ¼" from edge of tile. It is also recommended to apply masking tape ¼" from surface perimeter of the **DWT Smart-Tile** to protect tile surface from excess adhesive oozing from under tile.
8. When using AdcoSeal Körapur 125 adhesive/sealant, be sure to remove peel-away protective cover on bottom of cartridge and remove desiccant prior to loading into caulking gun. Only use adhesive supplied by the manufacturer.
9. Remove tile and apply a minimum of 10 ounces of Körapur 125 urethane adhesive for every 4 square feet of prepared concrete surface between taped perimeters. Using a 3/16" serrated edged trowel, spread the adhesive to cover the entire surface of the taped concrete. The entire concrete surface within the taped area must be "battered" to achieve maximum adhesion.

**NOTE:** For concrete surfaces with scored directional lines, compression joints or surfaces with large cracks, or are heavily pitted or scored will require filling prior to installation of the **DWT Smart-Tile**. Use additional Körapur adhesive as required to fill-in voids.

10. Set the **DWT Smart-Tile** square to the taped corners on the curb ramp area as outlined in the design drawings. Starting at one end and rolling the tile onto the surface pressing down firmly to remove air pockets as you lay the tile into position.
11. Using a cloth towel or weighted roller, knead the **DWT Smart-Tile** surface to remove all air from under tile. Apply sufficient pressure to the tile to ensure complete contact with surface and air removal.
12. Use a plastic shaping tool, spatula or a gloved finger to shape the adhesive that has oozed from underneath the tile. Make a cupped shape profile between the tile edge and adjoining concrete. Immediately remove tape from the tile and concrete surface after tooling the perimeter. Any adhesive on **DWT Smart-Tile** surface can be removed with mineral spirits.
13. Allow adhesive to cure a minimum of 30 minutes prior to drilling holes for concrete anchors.
14. Start drilling and installing anchors in the tile's molded anchor domes working from the middle of the tile outwards.
15. While continuing to apply pressure around the molded anchor dome in the **DWT Smart-Tile**, use a ¼" masonry drill bit and concrete drill, drill a 2" deep hole that is vertical and straight. Keeping pressure around the molded anchor dome while drilling is critical to keep dust from accumulating between the concrete and **DWT Smart-Tile** which keeps the tile from being installed flush to the concrete and may adversely affect the reliability of the installation.
16. Blow concrete dust from drilled hole prior to installing tile anchor. While maintaining pressure around the molded anchor dome, insert a stainless steel anchor to its full length and drive the pin of the anchor with a mallet being careful to drive pin straight to avoid side blows that could damage the anchor. Make sure the top of the fastener is even with the top of the molded dome.
17. Repeat Instruction #16 before installing the next anchor, and for each successive anchor.
18. Foot traffic on the **DWT Smart-Tile** should not be allowed until the perimeter adhesive is cured sufficiently to not allow tracking adhesive with footsteps (usually 60 minutes cure time).
19. It is not necessary to trim off tapered edges from the **DWT Smart-Tile** for proper alignment of adjacent tiles. The molded domes and non-slip patterns on the **DWT Smart-Tile** will match adjacent tiles when properly lined up with each other. It is important to leave a 1/8" gap between adjacent tiles to allow for expansion and contraction.
20. If **DWT Smart-Tiles** require cutting for custom sizing, or if molded anchor domes are removed by the cut, drill only on flat surface on tile, using a ¼" drill bit, to receive the anchor. Do not drill holes for anchors into any molded domes. Anchor should set flush with top of tile surface when properly installed.

**For complete installation instructions, please refer to our installation instruction video available on our website [www.trafficwks.com](http://www.trafficwks.com)**